

An Overview of Washington Baccalaureate Colleges

Getting Started!



What we'll cover tonight...

- Choosing a college
- Understanding the admission process and timeline
- Get to know the schools
- Getting in
- Ask questions!



Public Colleges

- Funded by local and state governments
- Usually offer lower tuition rates than private colleges for in-state residents



Private Colleges

- Funded primarily by tuition, fees, and other private sources
- Private donations can fund generous financial aid packages for students



Liberal Arts Colleges & Universities

- Offer a broad base of courses in liberal arts
 - Literature, history, languages, math, life sciences
- Most are private offering four-year programs



For Profit

- Businesses that offer a variety of degree programs
- Typically prepare you for specific career
- Tend to have higher costs and not all credits transfer



Special Focus

- Focused on a specific interest or student population



Specialized Mission

- HBCUs – Historically black colleges and universities
- HSIs – Hispanic-serving institutions
- Offer programs, services and activities targeted toward underrepresented students



Which college fits you?

Here are some things to consider



Size of the Student Body

Size can affect many of your opportunities and experiences including:

- Range of academic majors
- Extracurricular activities
- Amount of personal attention you receive
- Resources available

Which college fits you?

Here are some things to consider



Location

- Do you want to visit home frequently or do you want to experience a new part of the state/country?
- Do you prefer the serenity of a small town or do you like the hustle & bustle of a big city?
- What kind of activities do you enjoy outside of school?
- Is it a college town?

Which college fits you?

Here are some things to consider

Public vs. Private



- Public or state schools usually charge less than private schools for tuition, especially for residents, but private colleges often offer creative financial aid which may offset the difference in cost.
- While state schools have a reputation for large class sizes, don't base your decision on this generalization: Many public schools offer the same personal, student centered environment typical of smaller private colleges.

Which college fits you?

Here are some things to consider

Academic Programs

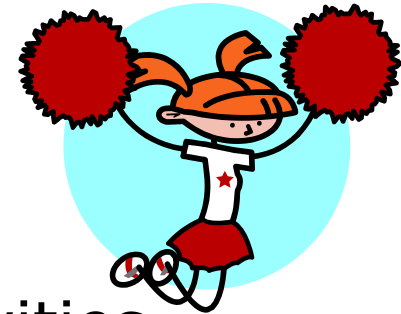


Your interests are the key!

- If you know what you want to study, research reputations of academic departments by talking to people in the fields that interest you.
- If you're undecided, relax and pick an academically balanced institution that offers a range of majors and programs.

Which college fits you?

Here are some things to consider



Campus Life

Aim for balance between academics, activities and social life

- ***What extracurricular activities, athletics and special interest groups are available?***
- ***Diversity, is there an ethnic or religious group in which to take part?***
- ***How do fraternities and sororities influence campus life?***
- ***Housing options.***
- ***Are the students welcomed by the community?***

Which college fits you?

Here are some things to consider



Cost



- The cost of going to college today emphasizes the importance of gaining experience and having a direction before you graduate from high school. Taking the opportunity to learn more about yourself and your future goals can help significantly in saving time and money
- Virtually all colleges will work to ensure that academically qualified students from every economic circumstance can find financial aid that allows them to attend.
- You need to find the scholarships, they typically don't find you.
- Scholarships can be applied to any school.
- In considering cost, look beyond the price tag...

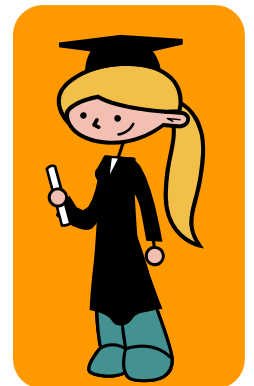
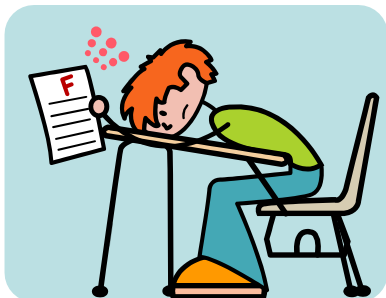


Which college fits you?

Here are some things to consider

Retention and Graduation Rates

- One of the very best ways to measure a school's quality and the satisfaction is to learn the percentage of students who return after their first year.
- Just as important; how many of these students go on to graduate?



Your Academic Resume

4 years English Literature/Composition

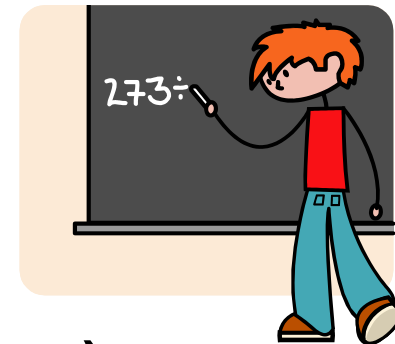
3-4 years Mathematics (senior year math as well)

3 years Social Studies



2 year Science (1 year Lab Science)

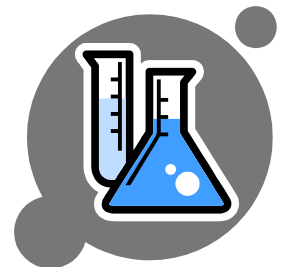
** WWU requires an algebra-based Chemistry or Physics*



2 years Foreign Language (same language)

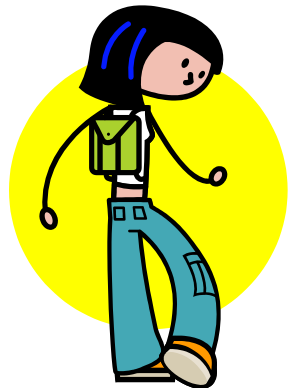
1 year Fine, Visual, or Performing Arts

** UW & WWU ½ year FVPA and ½ year core subject elective*



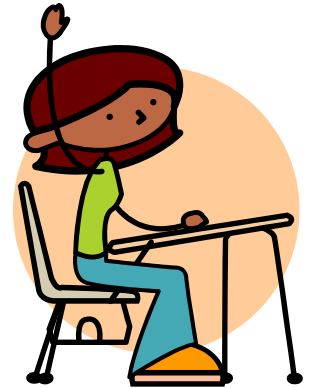
For Running Start Students...

- Considered as Freshmen in admissions process
- Admission and Housing priority as a freshman
- Eligible for freshman scholarships
- Awarded credit just as any other transfer
- Will need to have transcripts from all institutions
- Direct Transfer Agreement (DTA) associate degree usually fulfills lower division general education requirements



Admissions Factors Considered

- Overall Grade Point Average and Curriculum rigor
- Test Scores (SAT or ACT)
- Personal Statement and or essay
- Grade Trends
- Senior Year Curriculum
- Cultural Awareness/Diversity
- Community Involvement
- Extra-Curricular Activities
- Leadership Roles

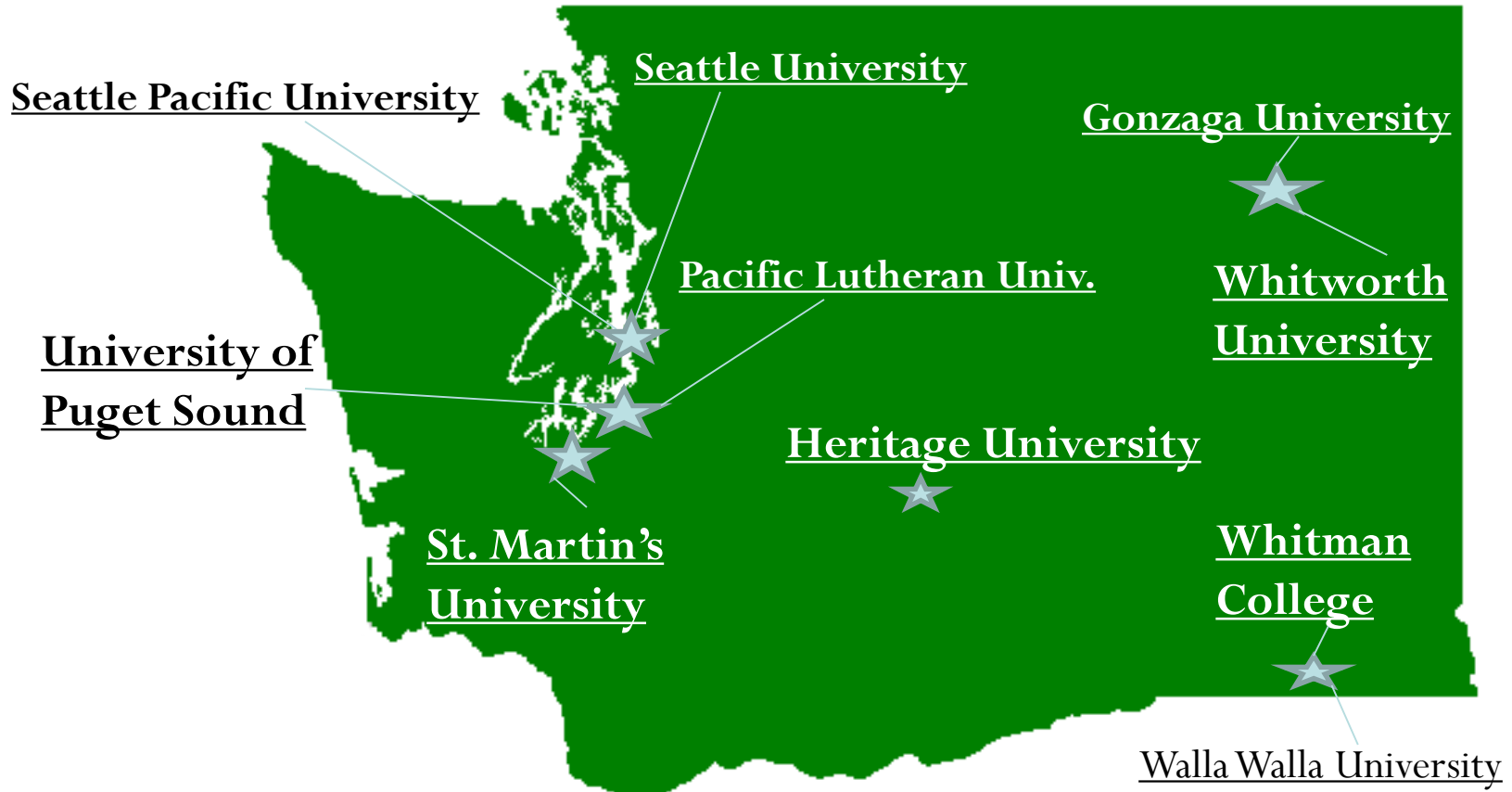


Typical Application Requirements

- Official Transcripts
- Official Test Scores (SAT/ACT)
- Complete Application
- Application Fee (or waiver form)
- Essay and/or Personal Statement
- Letters of Recommendation (Private Institutions)



Private Universities and Colleges of Washington



Public Baccalaureates in Washington

•Central Washington University –
Ellensburg

•Eastern Washington University –
Cheney

•The Evergreen State College -
Olympia

•University of Washington – Seattle

•Washington State University -
Pullman

•Western Washington University -
Bellingham



[Donate to FairTest](#)

More Than 1000 Accredited Colleges and Universities That Do Not Use ACT/SAT Scores to Admit Substantial Numbers of Students Into Bachelor-Degree Programs

Current as of Fall 2018

Support Test-Optional Admissions

You can help encourage even more colleges and universities to treat applicants as "More Than a Score." Your financial support will allow FairTest to promote test-optional policies at more conferences of admissions policy-makers, reach out to additional higher education leaders and distribute copies of this list to counselors and student advocacy groups. Thank you!

Check this site out if you are worried about SAT/ACT scores!

NOTE: This list is organized by school – to sort by state, click [here](#). For a print-formatted PDF file click [here](#). Several supplemental files are also available:

otherwise de-emphasize the use of SAT scores -- for all or many

grade-point average or class rank criteria; please check with the school's admissions

requirements for students attending high schools

More than 1000 four-year colleges and universities do not use the SAT or ACT to admit substantial numbers of bachelor-degree applicants.

[See the searchable database of schools.](#)

[Find out why and how schools go "Test Optional."](#)

What's New at FairTest

- Join FairTest in Celebrating Monty Neill and Welcoming Andre Green
- Andre Green to be New FairTest Executive Director when Dr. Monty Neill retires this Summer
- Major New Study Shows Test-Optional Policies Increase Diversity, Preserve Academic Quality

[Read more](#)

**Performing &
Visual Arts College
Fair:**

➤ **October 2**

Location

Fisher Pavilion – Seattle Center - Seattle,
Washington, United States

SEATTLE NATIONAL COLLEGE FAIR

Free and Open to the Public!

Nat'l College Fair:

➤ **November 2 - 3**

➤ **330+ colleges/univs
will be in attendance**

➤ **The fair is FREE!**

Location:

Washington State Convention Center
705 Pike St
Seattle, WA 98101



"With the help of WUE, I was able to pick a university that fit my needs on the field and in the classroom."

**Josh, Alaska resident
Mayville State University, History Education and Physical Education**



Image courtesy of Mayville State University

WUE Quick Links

- WUE HOME
- WUE FAQ
- WUE Schools: A-Z
- WUE Schools: By major/state
- Downloadable PDF/WUE Schools
- WUE Savings Finder
- Read Student Exchange: By the Numbers
- Graduate Studies (WRGP)
- Healthcare Professional Studies (PSEP)
- Read What Program Administrators Are Saying
- Read What Students Are Saying

WESTERN UNDERGRADUATE EXCHANGE (WUE)



In 2017-18, 40,000+ students saved over \$365.4 million on out-of-state tuition.

WESTERN
UNDERGRADUATE
EXCHANGE

Next year, be one of them!

Through the Western Undergraduate Exchange:

- Reap steep nonresident tuition discounts—averaging \$9,000/year!
- Choose from hundreds of majors at 160 two-/four-year schools in 16 Western states/U.S. territories (CNMI and Guam).
- Graduate with more options, less debt.

Find your school today!

With WUE, out-of-state students pay no more than 150% of in-state tuition at participating schools, compared with nonresident rates that can exceed 300% of in-state rates.

Eligible students must be from...

Learn more!

Students & Parents

WICHE Student Exchange Program By the Numbers, Feb. 2018



WICHE Student Exchange Programs: By The Numbers 2017-18

<http://wiche.edu/wue>

Central Washington University

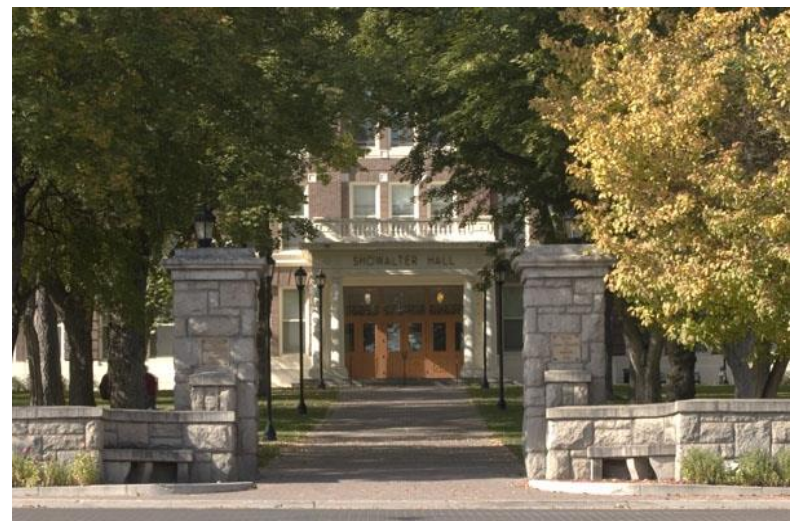


Ellensburg Campus

- Location: Ellensburg, Pop. 19,700
- Enrollment – 11,993
- Highlights and strong programs include...
 - ➔ Education and Business majors
 - ➔ Flight Technology Program
 - ➔ Chimposium
- Application deadline is rolling, February 1 priority date
- Automatic admission 3.0 GPA (with CADR's met, regardless of SAT/ACT scores)

www.cwu.edu

Eastern Washington University



Showalter Hall entrance

- Location: Cheney, pop. 12, 200
- Enrollment: 12,609
- Highlights and strong programs include...
 - ➔ Education and Business majors
 - ➔ Physical Therapy
 - ➔ Forensic Science
 - ➔ Dental Hygiene

- Application deadline is rolling, Feb. 15 priority date
- Automatic Admission with 3.0 GPA (with CADRs met & 1100 on SAT)

www.ewu.edu

The Evergreen State College

- Location: Olympia, pop. 51,200
- Enrollment: 3,907
- Highlights and strong programs include...
 - ➔ Interdisciplinary focus and majors
 - ➔ Strong liberal arts emphasis



- Application deadline is rolling, February 1 priority date
- Website *great* for learning about the school

www.evergreen.edu

University of Washington

- Locations: Seattle, Bothell & Tacoma
- Seattle Enrollment: 46,165 (30,475 undergrads)
- New and notable:
 - ➔ College of the Environment
 - ➔ UW leads the nation in Peace Corps volunteers, plus federal research funding



Drumheller Fountain, Libraries

- November 15th application deadline
- Bothell and Tacoma each have separate applications

www.washington.edu

Washington State University

- Locations: Pullman, Tri-Cities & Vancouver
- Pullman Enrollment: 20,286
- Highlights and strong programs include...
 - ➔ Regents' Scholarship programs
 - ➔ Veterinary medicine, communications, business, engineering, architecture and agriculture, nursing



A View Across Campus

- January 31st priority deadline
- FAFSA due by January 31st

www.wsu.edu

Western Washington University

- Location: Bellingham, pop. 87,570
- Enrollment: 15,574
- Highlights and programs:
 - Business, education, computer science, psychology, Environmental Studies



Red Square Fountain at Night

- Fairhaven College offers students a chance to explore an Evergreen-like option class-by-class
- January 31st, application deadline

www.wwu.edu

Private schools at a Glance

School	Notable
Gonzaga	School of Engineering and Applied Science, Accounting, increasingly more complete, Deadline: February 1
Pacific Lutheran (PLU)	Business, Nursing, Communication, student-faculty research, NCAA Division III, 40% study abroad, Deadline: Oct 15 th ; Nov. 15 th ; Dec. 15 th ; Jan. 15 th ...Rolling Admissions.
St. Martin's	Looking at expanding its Nursing programs, 94% of students receive financial aid, Deadline: Rolling.
Seattle Pacific (SPU)	Business, 90-100% acceptance into medical schools each year, 95% of students receive financial aid, Deadline: January 15
Seattle U. (SU)	Service is a priority, Sullivan Leadership Award (service and leadership), Nursing, Business, Criminal Justice, Engineering, New program: Marine Biology, Deadline: January 15.
Puget Sound (UPS)	94% of students receive financial aid, work closely with faculty advisor to chart academic path, Deadline: January 15
Whitman	Decisions start getting made in December to those students who have applied, statistically the most selective college in Washington, Deadline: January 15
Whitworth	Located in Spokane, 80% graduation rate, 85% retention rate from frosh to soph years, test optional school (no ACT/SAT required)

Eligibility vs. Competitiveness

“Eligibility” is:

- What the school *needs* to see
- Demonstrating that you’re ready to benefit from what the school has to offer



“Competitiveness” is:

- What the school *wants* to see
- Demonstrating that you’re deserving of one of a limited number of spaces

How hard will the “competitive” part be for me?

- Depends on you, the college, and the year’s admission trends
- The college will only know what you tell them, so be thorough and “YOUnique!”
- Talk to each college about where you stand and beware of rumors from the media or other students



How can I increase my chances of being offered admission?

- Take courses that meet or exceed high school core requirements.
- Prepare for and achieve an above average score on the SAT or ACT (take them twice).
- Provided thoughtful, well-written responses for the personal statement
- Get involved with community organizations and clubs.
- Talk with teachers and counselors about recommendations.
- Apply early!!



College	Admit Rate (2017-2018)	Avg. GPA
CWU	78%	2.8 – 3.5
EWU	68%	3.22
Evergreen	96%	2.81 – 3.53
UW	46%	3.7 – 3.95
UW Bothell	80%	3.37
WSU	74%	3.19 – 3.76
WWU	83%	3.27 – 3.81

College	Admit Rate (2017-2018)	Avg. GPA
Gonzaga	65%	3.50 – 3.98
PLU	75%	3.48-4.0
St. Martin's	60%	3.11-3.79
Seattle U	73%	3.4 – 3.9
SPU	82%	3.51
UPS	84%	3.49
Whitman	51%	3.75
Whitworth	87%	3.50 – 4.02

Things to remember...

- For GPA, each college always considers 9th-11th, and consider or require fall of 12th – and that can depend on deadline and/or on your record.
- GPA includes all graded classes!
- For ACT or SAT, take at least once in 11th, and consider taking both eventually. Colleges can use your best composite/total and exclude the rest.



* Don't assume a higher test score or overall GPA gets you in...

Good use of the Internet!

- Visit and explore college websites
- Email and correspond with university staff & departments
- Apply online.
- Create and use your student ID
- College & Career Prep Sites:

www.collegeboard.com, princetonreview.com,
mappingyourfuture.org, actstudent.org,
fafsa.ed.gov, www.collegemajors101.com



The planning timeline

Junior Year



- Attend college fairs
- Consider AP or Running Start
- Take PSAT
- Take ACT or SAT
- Develop top 10 list
- Start financial plan
- Visit, ask, explore!



The planning timeline

Senior Year



- Re/take ACT or SAT
- Begin working on essays, letters of recommendation
- Make a master calendar with deadlines & dates
- Top 5 list
- Research scholarships
- Complete FAFSA
- Beat every deadline!



Next steps!



- Request information
- Talk to an Admissions Counselor
- Visit the campus/attend info session
- Test prep
- Hit the books
- Identify your areas of interest and make the right choices for you!

Washington State Colleges & Universities

